

The Kona Orchidist

Volume 24, Issue 4

April 2009

President's Message

Kathy Penwell

Aloha to all,

Once again we had a good turnout for an interesting presentation. I know many of us aren't at Matt's level on the computer but he did have some good ideas about how to catalog our collections. Short of bringing a laptop into our shade houses, one way to start a list of your orchids would be to add them to your spread sheet when you bring them into the house in bloom. I found this an easy and quick way to start a list of my orchids. Using a digital camera to take and record a picture of each orchid in bloom was another of Matt's great ideas.

Don't forget to keep up your fertilizing programs so you can bring a blooming orchid for our May show display. Our society by-laws state that each member

Next Meeting

Friday, April 3

6:30 PM

Hualalai Academy

Auditorium

Speaker: Neal Okimoto, Pacific Paradise Orchids

Photo: *Bulbophyllum baucoense*, March's Advanced Winner



INSIDE THIS ISSUE

- 1 President's Message
- 2 Your Orchid Society Needs You (and Your Plants)!
- 2 Neal Okimoto to Speak on Selecting Healthy Plants
- 2 The Good News
- 2 Our New and Returning Members
- 4 In the News
- 5 AOS Corner
- 5 Check Out Our Website!
- 5 Bring a Guest, Get a Raffle Ticket
- 6 Ribbon Judging and the Joy of Clerking
- 7 More Photos on the Web!
- 7 Email Address Changes
- 8 March Show and Tell
- 9 Contacts

should provide at least one blooming plant to add to our display. Remember to label your plants in case you aren't there when we break down the display. Address labels placed low on the side of the pots adhere well and don't show when in the display. Plants should be brought to Hale Halawai between 7:00 and 7:30 AM on Friday, May 8th. If you can't get them to us then, you can drop them at my house in Kona Palisades on Thursday evening. Call me at [removed for web] if you will be dropping them off with me. I'll ask for a volunteer for a drop place in town.

Just before our regularly scheduled April meeting, Maggie will conduct a beginner's class on how to pot up Honohono orchids. This demonstration will start at 6:15 PM. We received a generous donation to the society of some of these very pretty orchids.

Our April speaker, Neal Okimoto, has been a good resource to our society for years. His nursery is the one that supplies orchids to all the Wal-Marts and Kmarts in the state. He grows a variety of orchid species. We have visited his nursery in Pahoia many times. He is a wealth of good information and I look forward to his talk on selecting healthy plants.

Happy Growing, Kathy ■

Mark Your Calendars!
Our Annual Show and Sale
at Hale Halawai
Friday, May 8th and
Saturday, May 9th

Your Orchid Society Needs You (and Your Plants)!

We really want to make this year's Show and Sale something special and we are relying on your help! As we have mentioned in previous newsletters, we are expanding the "Show" portion of the Show and Sale, and we need all of you to help out in providing us with your beautiful orchids for our display. We plan to have ribbon judging for the event and both the Daikufuji and Hilo Orchid Societies plan to set up their own displays at the show. Let's not be outdone by our sister societies; let's go home with some of those ribbons!

You can provide any orchid plants to our show. In fact, they don't even have to be bloomed by you; you could buy them at the store and bring them along to us. Please try your best to stake and trim the plants well, and clean up the pots, however. See the President's Message on page 1 concerning specifics on labeling the plants and getting them to the show. You can either get them to Kathy in advance of the show or bring them along to Hale Halawai between 7:00 and 7:30 AM on Friday, May 8th.

Also, if you haven't already done so, please volunteer for one of the slots on the work schedule for the show, which takes place on May 8 and 9! The theme for this year's show is "Kona Orchids: Good to the Last Drop!" which combines our orchids with a Kona coffee theme. As always, the success of the Show and Sale is dependent upon the efforts of all of our members. It is always a great opportunity to get to know the other members better and to learn more about the many varieties of orchids. ■

Neal Okimoto to Speak on Selecting Healthy Plants

Our main speaker for the April meeting will be Neal Okimoto, the owner of Pacific Paradise Orchids in Pahoa, HI. Neal will be speaking on how to select healthy plants for our collections. A former judge for the American Orchid Society with a degree in Tropical Agriculture, Neal continues to research and travel throughout the world to collect the widest variety of healthy orchid plants.

As an added attraction to the April meeting, our own Maggie McLean will be conducting a beginner's class on potting Honohono orchids. The demonstration will begin at 6:15 PM, just before our regularly scheduled meeting. So come a bit earlier than normal to hear what Maggie has to say about these beautiful orchids. ■

The Good News

Brian Swanson, AOS Director of Information Technology

I am pleased to announce the AOS Orchid Forum. The new forum has a lot of new features that I think you will really enjoy. Also there are familiar forum areas plus a few new ones. I encourage you to go and register for an account on the new forum and explore it and then get involved helping build the AOS Orchid Forum community. (The AOS Orchid Forum like the old forum uses a different login than www.aos.org. We hope to correct this and appreciate your patience.)

Some of highlight of the new forum are:

User Albums - Create a photo album, create a bunch of photo albums! Group up to 80 photos into an album to share with other members. You, as well as your friends, can comment on the photos.

Send a Private Message - Want to ask a question of someone? Send a Private Message.

Make new friends - You can add your friends to a contact list. Leave messages on their profile about your success or congratulate them on theirs.

Join a Social Group - Join a group to talk about a specific topic. Better yet start a group.

And of course you can post in the forums. A whole new set of tools to format your message, add pictures, links, and more.

You can access the AOS Orchid Forum through www.AOS.org or at forum.aosforum.org.

Once you are registered and logged in read through the FAQ's to learn more about how to use the new forum.

I hope you join and enjoy the new AOS Orchid Forum.

Our New and Returning Members

Please welcome back Jacquie Moss-Jacobs, who has recently rejoined KOS, and welcome our newest members, Ralph Steinke and Victoria and Ron Sanders. Please make all our new and returning members feel welcome! ■

THE KONA ORCHID SOCIETY
ANNUAL MOTHER'S DAY WEEKEND
ORCHID SHOW & SALE



Friday, May 8
10 a.m. – 6 p.m.

Saturday, May 9
8 a.m. – 6 p.m.

At Hale Halawai, Ali'i Drive
located on the waterfront in downtown Kailua-Kona

- Wide array of orchid varieties from top island growers
- Exotic & rare orchid specimens on display
- Free orchid culture classes
- Orchid arts & crafts



Admission Free!

In the News

Volunteers Fighting to Keep American Orchid Society Open

Jane Musgrave- PalmBeachPost.com
(March 10, 2009)

Orchid enthusiasts dedicate themselves to growing and cultivating. It's not easy watching something die.

With that thought in mind, and the belief that other plant lovers share their view, a group of volunteers has launched a "Save Our Garden" campaign to stop the American Orchid Society from closing its doors to the public at the end of May as planned.

"It was a shock to so many people," orchid lover Jackie Wood said of the closing announcement that was made last month. "They said if we had only known, we would have donated money."

Now, the Boca Raton woman said, those people will have a chance to do just that.

Wood, Jupiter resident Rhonda Heide and other members of two society advisory committees have until the organization's board meets on April 24 to line up enough pledges to persuade it not to close the lush 4-acre garden and greenhouse in suburban Delray Beach.

Efforts will be made to rally hundreds of members of South Florida garden clubs and other horticulture groups, whether they're passionate about hibiscus, ferns, bromeliads or orchids, Wood said. Letters will also be sent to corporations in hopes that they will pledge support.

"I do not believe that the locals are willing to relinquish this priceless resource," Heide wrote in a letter that is going out to community organizations.

Those who can't afford to donate money will be asked to give time, Wood said. The pledges, along with suggestions on ways to raise money and increase community support over the long haul, will be presented to the board when it meets next month in Houston.

"We don't have a magic number," she said. "We're taking everything and anything."

In truth, there is no magic number, said Jim Jordan, executive director of the 88-year-old organization that

moved into its \$8 million headquarters off Jog Road eight years ago.

While a projected \$500,000 deficit to cover its \$2.5 million operating budget spurred the board to agree to close the gardens to the public and lay off about half of its roughly 25-member staff, the financial problems are more complicated, he said.

For instance, its investments are off about 30 percent because of the collapse of Wall Street. Further, the society has never been able to attract visitors or lucrative weddings during the summer months, making it hard to justify keeping the gardens open year-round.

Still, he said, he is optimistic the volunteers' efforts will pay off.

"I have been very impressed by their passion," he said. "Also they have a can-do attitude that's pretty infectious."

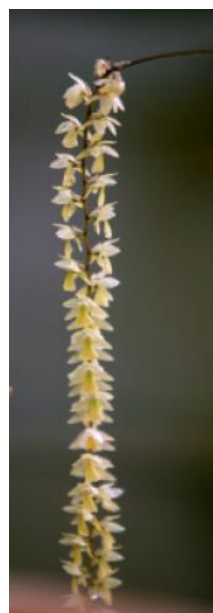
The financial woes have had a silver lining: since it was announced that the gardens would be closing, the number of visitors has increased by nearly 20 percent, he said.

For information about efforts to save the gardens go to: www.sflcouncil.org/News.html . ■

How to help

[Save the gardens.](#)

Send a donation or note of support to Jim Jordan, AOS, 16700 AOS Lane, Delray Beach, FL 33446 or, write to rhonda.heide@gmail.com or bocaorchidlady@aol.com



A tiny dendrochilum is a resident at the greenhouse at the American Orchid Society.

Photo: Meghan McCarthy, Palm Beach Post

AOS Corner

Melba Butler, AOS Affiliated Societies Committee

Orchid Trivia from the Minutes of the American Orchid Society Annual Members' Meeting held on May 19, 1948, at the Oyster Bay, Long Island Estate of Vice President William R. Coe, published in the American Orchid Society Bulletin, Vol. 17, No. 8 – from AOS President Rodney Wilcox Jones' Annual Report on page 480: "We have more than 140 millions of people in this country and will have over 150 millions by 1955, and I suppose there are fewer than 10,000 people growing orchids among this population, even counting those who have only one plant. Some commercial growers think that spreading knowledge of orchid culture endangers their business, but in my opinion, it works out just the other way."

Commercial growers have agreed with Mr. Jones, because currently, commercial orchid growers constantly share their knowledge by speaking to orchid societies at monthly meetings, workshops, and annual and semi-annual shows, sales and meetings. The knowledge of orchid culture and so much more about them can also be found many ways.

But those of us who are planning and working on aspects for spring orchid shows and meetings should probably take a break from so many details flooding our heads. That's what I thought and decided the AOS Corner should be about something other than the upcoming AOS show and meeting that takes place in Houston April 22-26.

But there didn't seem to be an escape because when I tried to put all "orchid show" thoughts away, I found myself "googling" the word "orchids" and got 41,200,000 results on Yahoo; and when I googled in Google, there were 3,580,000 results for the word "orchids". I'm not sure why there were more results on Yahoo. I decided to search in eBay and there were 9,110 results for the word "orchids".

So, now we could find information on most any orchid or orchid product known to man just by searching from our keyboards. We can find orchids and orchid products, orchid items, memorabilia, books and periodicals, even things that resemble orchids. I even "googled" for "orchid-like" and found about 591,000 results.

I finally gave up trying to escape all the details in my head for the upcoming international orchid event in

Houston next month. What I have on my mind is ...that's when the Houston Orchid Society welcomes the American Orchid Society, SouthWest Regional Orchid Grower's Association, Orchid Digest Corporation, International Phalaenopsis Alliance, Slipper Orchid Alliance, Odontoglossum Alliance and the Pleurothallid Alliance. Check on details at www.houstonorchidsociety.org.

We promise to be ready by April 22. Come and experience "Orchids, Texas Style" at the Hilton Houston North (formerly the Wyndham Greenspoint), 12400 Greenspoint, Houston, TX 77060.

See you there! ■

Check Out Our Website!

We continue to add content to our website at www.konaorchidsociety.org so, if you haven't been there recently, check out what's there.

Also, please let your friends, and anyone else interested in orchids, know about our site. Not only do we have information on what is happening at KOS and links to other great information on orchids from across the web, but we even have a membership application for them to fill out!

In addition, if you have any ideas to make the site better and more useful to both members and the public, let our Board know or send us a message to the new KOS email address at KOS@konaorchidsociety.org.

We also continue to look for artists that could help with developing a better banner for the top of the site pages, coordinating site colors and textures, and selecting graphics or photos. If you can help us with the site, in any way, let us know. ■

Bring a Guest, Get a Raffle Ticket

The Society is always looking for new members and guests are always welcome. Often, guests become members once they attend one of our meetings. Therefore, to encourage members to bring along guests, the Board has decided that each guest will receive a blue raffle ticket. Even more, if your guest becomes a member, you will receive a red raffle ticket. So, if you would like a better chance to get one of our raffle plants, consider asking a friend to the next meeting. ■

Ribbon Judging and the Joy of Clerking

Bill Thoms, 2008

I am an Accredited judge of many years and have judged at many shows. These are some thoughts of mine and I hope they will encourage you to participate and give you some tips to make it easier and more enjoyable.

Ribbon Judging can be one of the best parts of seeing an Orchid Show. By viewing the show along with the judges, you get a much more critical look at the various plants and can see why one is considered better than another. It is, of course, subjective, and that is why it is called judging.

It is easy to be on the team of judges, just ask the Chair of Judging at the show to be an observer. Better yet, the Society sponsoring the show can request to have members placed on the teams. Be sure to let the Chair know early on since this will speed up the process of selecting the teams. This is very helpful for members who wish to enter the judging program, because the more plants you see, the better judge you will become. It also helps when purchasing plants.

Clerking can be a lot of fun, and informative too, even if you don't know all the names or can't decide which exhibit looks the best. The most fun of "Clerking" is to be right there when the judges are judging so you can find out why they do - what they do.

The following are some tips to make clerking easier and faster. The main requirement is to learn something, and have fun too!

TIPS FOR THE WHOLE TEAM

Wear comfortable but appropriate attire. Tennis shoes are fine. However, please do not arrive in a t-shirt, shorts and rubber sandals.

Stay with your Judging team; don't make them look for you. It should be all right to ask questions of the judges after they have judged the category. When in doubt, ask at the beginning of judging. It's all right to talk a little among yourselves, just

be quiet and remember to stay out of the way, not only of your own judging team but other teams as well.

Memorize someone on your team so you can find them in the crowd if you get split up. (Especially helpful for Spotters and Ribbon clerks).

Get a floor plan of the Show and, if possible, a walking tour, which is a list of the plants the team will be judging in a walking order from one end of the arena to the other. Don't forget, have fun!

TIPS FOR THE CHIEF CLERK

You are the one whose job it is to make sure everything runs smoothly and with the least amount of wandering around or backtracking.

First get your team together, introduce yourself and the other clerks.

You will usually get a folder with the class numbers, plants entered and any trophies assigned to the team. Check the schedule to see if trophies are awarded to any plant in the show, or if they must be entered. If you have a doubt, check with the Chair of Clerking. The idea is to look at the entries and plan how to walk through and see them all in the least time. If there is **one** entry in a class two or three down the line that is in a close exhibit, you **could** show this to the team leader and ask if it could be judged now. Quite often they will agree. Don't go too far ahead in case plants need to be reclassified into those categories. (This happened to me on my first time as leader).

For classes with two or more entries, plan to view the plants from one end of the arena to the other, if possible. Most judges have walked many, many shows and are very receptive to juggling classes to avoid backtracking.

Start by saying clearly to all the judges on your team, "this is class number so and so; there are x number of entries and this is #1. When you are at the last plant in that group, you say, "this is the last entry in this class".

If there are any reclassifications or disqualifications made by the team, make sure they are noted on the right entry forms.

continued on page 7

It will usually be written in the schedule under the 'Trophies' section which classes are included in each trophy category. When it is time to award the trophies, go back in the sheets and identify the first place winners in the classes for each trophy.

Make sure the judges sign the appropriate sheets (usually all sign the first page and sometimes one each for the rest).

Assist the Ribbon Clerk, if necessary, to check that the right ribbons are on the right plants. (See below for help codes). Above all, remember to have fun (see above).

Keep your team together until the judges are completely through. Sometimes, the team will be given other classes to judge, and will need the clerks. When all judging is completed, ask the Judging Team Captain if he or she is through and ask to be excused. If you have the lunch tickets, be sure to pass them out, because the free lunch is the only pay you get for a job well done!

TIPS FOR THE RIBBON CLERK

You are responsible for seeing that the right ribbons get on the right plants. You really want to stay with the judges, have fun and learn as much as possible by hearing what they have to say.

You can do both! In order to make sure this happens, you only need to write three things on the back of each ribbon -- and they are the same three things!!

CLASS NUMBER (for example,
CL 14a)
SPACE NUMBER (i.e., **SP 6)**
ENTRY NUMBER (i.e., **#244)**

That's all there is to it. Even if you don't think you can remember what goes where, at the end of judging, you can go to Space 6, look up Class 14a, which might be Cattleya Hybrids - Yellow, and find the plant with the tag that has 244 on it. Even someone who was not on the team could put the right tags on later, although by staying with the team, you SHOULD know some of them. There is no need to look at a pink phalaenopsis if the class is yellow cattleyas. Remember, at this point you should be having a **whole lot of fun!**

TIPS FOR THE SPOTTER

The job of spotting the plants to judge should be given to someone knowledgeable in orchids. This may not in all instances work out that way, and if so, generally you can count on assistance from the judges on the team by stating the name of the plant as clearly as possible. Remember the class; there is no need to be looking at white Dendrobiums if the class is pink Phalaenopsis. When the right plant is located, point to it without stabbing any of the flowers, making sure ALL the judges on the team see it, and then step out of the way so the team (or any other team) can get in for a closer look.

Your job is quite important. Many times there are two or more plants in one class to view in one exhibit, and you need to make sure each judge sees them all. Pretend you're a guide and you get a tip for attention to detail. Check with the Head Clerk for the next plant and exhibit to locate, and remember --- **HAVE FUN!!!** ■

More Photos on the Web!

A Shutterfly account was set up to share KOS photos! You can upload an unlimited number of photos and share them by emailing the link to KOS members and other friends. This helps to avoid email restrictions (such as file size) when sending photos by email. Anyone you email the link will be able to view, copy, and order photos.

- The website address is:
<http://www.shutterfly.com/>
- The login is [removed for web]
- The password is: [removed for web] ■

Email Address Changes

If your email address has changed, please send a note to Linda at lbaseman@konaorchidsociety.org so she can update the membership list. Also, if you are not receiving the newsletter, let her know so she can check it out for you. ■

March Show and Tell

Mahalo to Ben Dysart
for photographs

Novice:

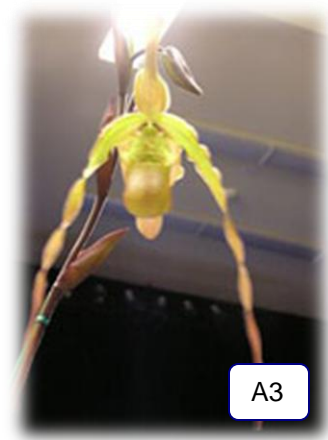
- 1st: Epc. Rene Marques 'Tyler' - Marion Newton
- 2nd: Oncda. Charlesworthii 'Mishima' – Pauline Johnston
- 3rd : Maxillaria tenuifolia – Victoria Sanders

Open:

- 1st: Dendrobium secundum – Shirley Kauhahao
- 2nd: No name – Christopher Allen
- 3rd: Hknsa. (Mimi Doris X Why Not) 'Carmela' – Linda Baseman

Advanced:

- 1st: Bulbophyllum baucoense – Walter Scheeren
- 2nd: Cattleya skinneri 'Casa Luna' – Matt Sylva
- 3rd: Phrag. Sorcerer's Apprentice 4N X Grande 4N – Chuck Pikcunas



Board, Officers, and Subcommittee Information

Board of Directors

Bob Zeller

Joel Gimpel

Jill Spanheimer

Judy Schuman

Linda Baseman

jschuman@konaorchidsociety.org

lbaseman@konaorchidsociety.org

Officers

President

Kathy Penwell

Vice President

Jan Rae

Treasurer

Charles Pikcunas

cpikcunas@konaorchidsociety.org

Secretary

Pauline Johnston

pjohnston@konaorchidsociety.org

Subcommittee Chairpersons

AOS Contact

Charles Pikcunas

cpikcunas@konaorchidsociety.org

Audit Committee

Linda Baseman

lbaseman@konaorchidsociety.org

Bob Zeller

Charles Pikcunas

cpikcunas@konaorchidsociety.org

August Picnic

Open

December Banquet

Hildi Vieira

Nancy Sallee

Conservation

Linda Nelson

Elections

Open

Greeter

Lianne Shiroma

Housekeeping

Open

Hualalai Academy

Kathy Penwell

Membership

Linda Baseman

lbaseman@konaorchidsociety.org

Mother's Day Event

Charles Pikcunas

cpikcunas@konaorchidsociety.org

Newsletter/Web Editor

Pauline Johnston

pjohnston@konaorchidsociety.org

Raffle Plants

Charles Pikcunas

cpikcunas@konaorchidsociety.org

Ticket Sales

Jan Rae

Joel Gimpel

Refreshments

Open

Show and Tell

Matthew Sylva

Stefan Folkendt

Tours

Cheeta Wilson

Kona Orchid Society
P.O. Box 4566
Kailua-Kona, HI 96745
www.konaorchidsociety.org